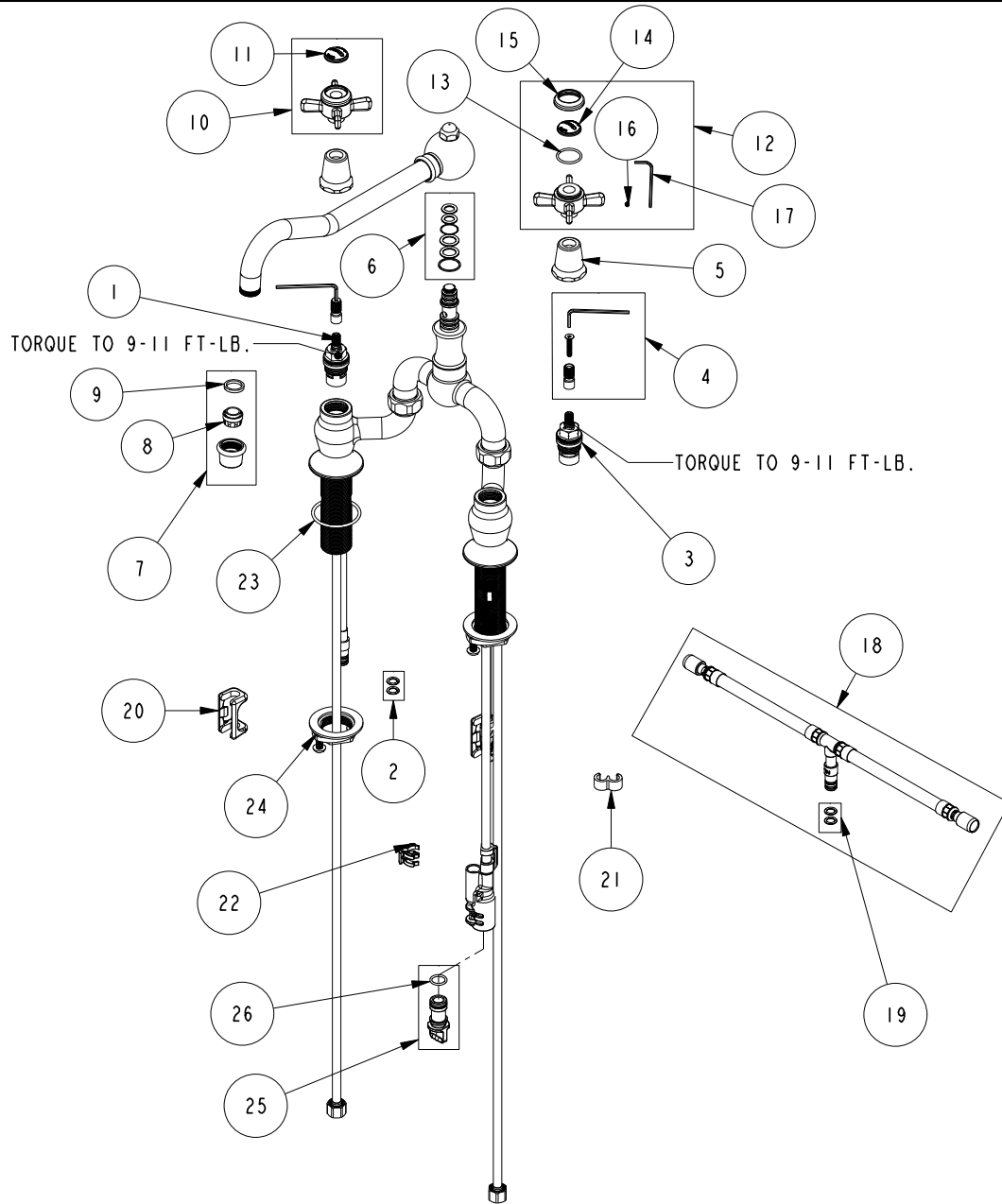


REPLACEMENT PARTS



| ITEM | PT/ASSY | SPECIFY FINISH | DESCRIPTION |
|------|---------|----------------|---|
| 1 | 1-006 | | C/S VALVE CARTRIDGE - HOT |
| 2 | 1-399 | | O-RING KIT FOR SPOUT PEX CONECTION |
| 3 | 1-005 | | C/S VALVE CARTRIDGE - COLD |
| 4 | 10-304 | | CARTRIDGE STEM ADAPTER KIT |
| 5 | 13854 | YES | HANDLE BONNET - TUB FILLER |
| 6 | 10-302 | | SPOUT O-RING AND WASHER KIT |
| 7 | 2-399 | YES | AERATOR ASM BRIDGE |
| 8 | 11916 | | AERATOR JR. INSERT-1.8 GPM |
| 9 | 91500 | | GSKT, .578 ID X .728 OD X .102 THK EPDM |
| 10 | 2-114 | YES | THIN BLADE X - HANDLE HOT |
| 11 | 10816 | | PORC BUTTON - CHAUD (HOT) |
| 12 | 2-115 | YES | THIN BLADE X - HANDLE COLD |
| 13 | 91023 | | O-RING, #2- 019, EPDM, 65-75 DURO, NSF 61 |
| 14 | 10815 | | PORC BUTTON - FROID (COLD) |
| 15 | 10814 | YES | BEZEL |
| 16 | 92000 | | SCREW 8 - 32 X 1/8 SS |
| 17 | 10192 | | HEX KEY TOOL, #8 5/64 |
| 18 | 1-777 | | TEE HOSE ASSY |
| 19 | 1-399 | | O-RING KIT FOR SPOUT PEX CONECTION |
| 20 | 91568 | | RETAINER CLIP |
| 21 | 91811 | | TEE HOSE CLIP |
| 22 | 91812 | | DIVERTER CLIP |
| 23 | 91768 | | O-RING, #2-130, EP, 50 DURO - GREY |
| 24 | 1-393 | | 1-1/8 18 UNEF MOUNTING KIT |
| 25 | 10-325 | | DIVERTER PLUG KIT |
| 26 | 91019 | | O-RING, #2- 014, EPDM, 65-75 DURO, NSF 61 |

**KITCHEN BRIDGE FAUCET
9451**

REV G EN-4727 10/20/23 APPROVED RS

NEWPORT BRASS.

t: 949.417.5207 | www.newportbrass.com